

COLOUR PLATES

PLATE 1

ODONATA

(Males)

- A *Synthemis eustalacta*, Corduliidae
- B *Nannophya occidentalis*, Libellulidae
- C *Austrogomphus guerini*, Gomphidae
- D *Cordulephya pygmaea*, Corduliidae
- E *Diphlebia coerulescens*, Amphipterygidae
- F *Synlestes weyersii tillyardi*, Synlestidae
- G *Telephlebia godeffroyi*, Aeshnidae
- H *Austrolestes cingulatus*, Lestidae
- I *Nososticta solida*, Protoneuridae
- J *Austrocnemis splendida*, Coenagrionidae
- K *Pseudagrion aureofrons*, Coenagrionidae

(All magnified 1.2 times, except J, which is magnified 1.8 times)

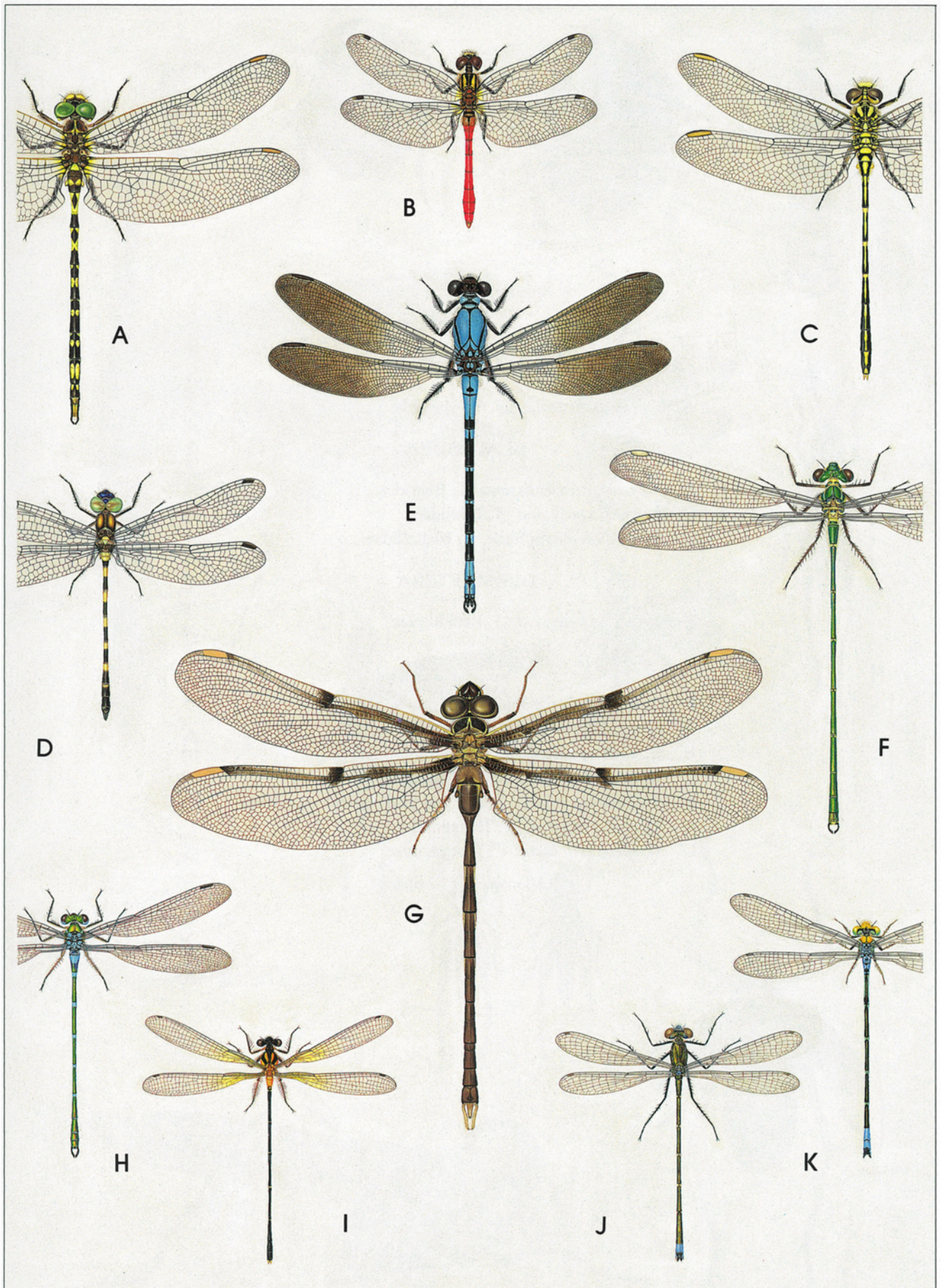


PLATE 2

MANTODEA

- A *Tenodera australasiae*, ♀, Mantidae

BLATTODEA

- B *Polyzosteria viridissima*, ♂, Blattidae
C *Anamesia polyzona*, ♂, Blattidae
D *Ellipsoidion magnificum*, ♀, Blattellidae

DERMAPTERA

- E *Apachyus peterseni*, ♂, Labiduridae

ORTHOPTERA

- F *Gastrimargus musicus*, ♂, Acrididae
G *Froggattina australis*, ♂, Acrididae
H *Monistria pustulifera*, ♂, Pyrgomorphidae
I *Moraba virgo*, ♀, Eumastacidae
J *Kosciuscola tristis*, ♂ (dark and pale phases), Acrididae
K *Alectoria superba*, ♀, Tettigoniidae
L *Acripeza reticulata*, ♀, Tettigoniidae

(All magnified 1.2 times)

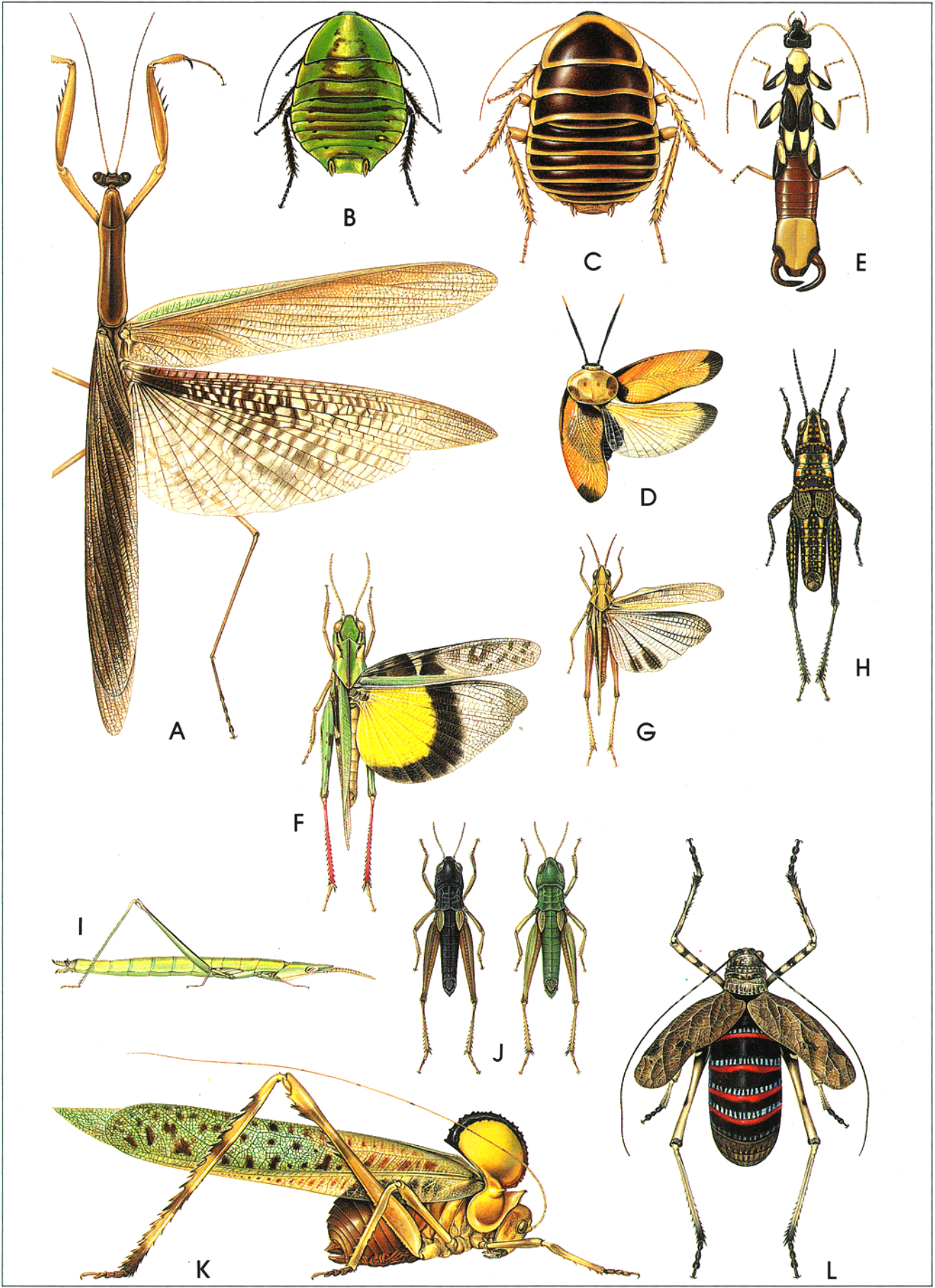


PLATE 3

HEMIPTERA

AUCHENORRHYNCHA

- A *Desudaba danae*, Fulgoridae (x 1.2)
- B *Achilus flammeus*, Achilidae (x 1.8)
- C *Siphanta acuta*, Flatidae (x 1.8)
- D *Platybrachys leucostigma*, Eurybrachyidae (x 1.8)
- E *Gelastopsis insignis*, Eurybrachyidae (x 1.8)
- F *Eoscarta carnifex*, Cercopidae (x 1.8)
- G *Cicadetta melete*, Cicadidae (x 1.2)
- H *Eurymelops bicolor*, Eurymelidae (x 1.2)

HETEROPTERA

- I *Ectomocoris decoratus*, Reduviidae (x 1.8)
- J *Ectomocoris ornatus*, Reduviidae (x 1.2)
- K *Ptilocnemus femoratus*, Reduviidae (x 2.4)
- L *Morna florens*, Pentatomidae (x 1.8)
- M *Poecilometis armatus*, Pentatomidae (x 1.2)
- N *Catacanthus nigripes*, Pentatomidae (x 1.2)
- O *Commius elegans*, Pentatomidae (x 1.8)
- P *Tectocoris diophthalmus*, Scutelleridae (x 1.2)
- Q *Scutiphora pedicellata*, Scutelleridae (x 1.8)
- R *Stauralia chloracantha*, Acanthosomatidae (x 1.8)
- S *Oncomeris* sp., Tessaratomidae (New Guinea) (x 1.2)
- T *Peltopecta crassiventris*, ♂, Tessaratomidae (x 1.2)
- U *Lampromicra senator*, Scutelleridae (x 1.8)
- V *Melanerythrus mactans*, Lygaeidae (x 1.8)
- W *Spilostethus hospes*, Lygaeidae (x 1.8)
- X *Dysdercus cingulatus*, Pyrrhocoridae (x 1.2)
- Y *Physopelta gutta*, Largidae (x 1.2)
- Z *Aulacosternum nigrorubrum*, Coreidae (x 1.8)

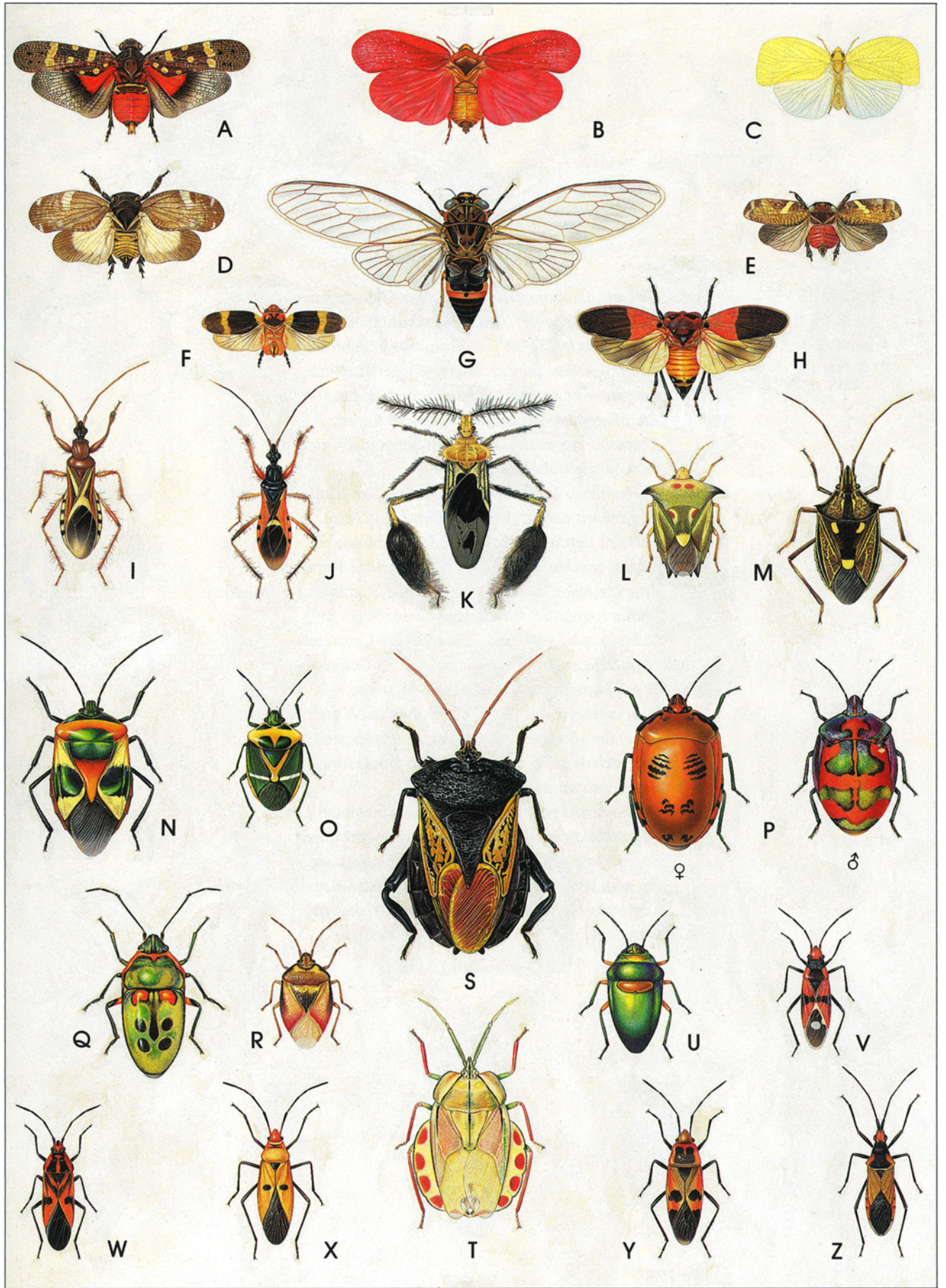


PLATE 4

COLEOPTERA

- A *Megacephala australis*, Carabidae-Cicindelinae
- B *Calosoma schayeri*, Carabidae-Carabinae
- C *Prophanes mastersi*, Tenebrionidae-Tenebrioninae
- D *Anoplognathus aureus*, Scarabaeidae-Rutelinae
- E *Anoplognathus smaragdinus*, Scarabaeidae-Rutelinae
- F *Anoplognathus smaragdinus*, colour variety
- G *Rhipidocerus australasiae*, Cerambycidae-Prioninae
- H *Paracalais gibboni*, Elateridae
- I *Eurhamphus fasciculatus*, Curculionidae-Molytinae
- J *Rhytiphora dallasi*, Cerambycidae-Lamiinae
- K *Penthea pardalis*, Cerambycidae-Lamiinae
- L *Anoplognathus viriditarsis*, Scarabaeidae-Rutelinae
- M *Anoplostethus laetus*, colour variety, Scarabaeidae-Rutelinae
- N *Phalacrognathus muelleri*, Lucanidae
- O *Ischiopsopha yorkiana*, Scarabaeidae-Cetoniinae
- P *Eupoecila australasiae*, Scarabaeidae-Cetoniinae
- Q *Sagra papuana*, Chrysomelidae-Sagrinae
- R *Uracanthus triangularis*, Cerambycidae-Cerambycinae
- S *Carenum sumptuosum*, Carabidae-Carabinae
- T *Stigmodera gratiosa*, Buprestidae-Buprestinae
- U *Lamprima aurata*, Lucanidae
- V *Cyphogastra pistor*, Buprestidae-Buprestinae
- W *Stigmodera chevrolati*, Buprestidae-Buprestinae
- X *Stigmodera amabilis*, Buprestidae-Buprestinae
- Y *Pseudotaenia quadrisignata*, Buprestidae-Buprestinae
- Z *Stigmodera alternata*, Buprestidae-Buprestinae
- ZA *Calodema regalis*, Buprestidae-Buprestinae

(All magnified 1.2 times)

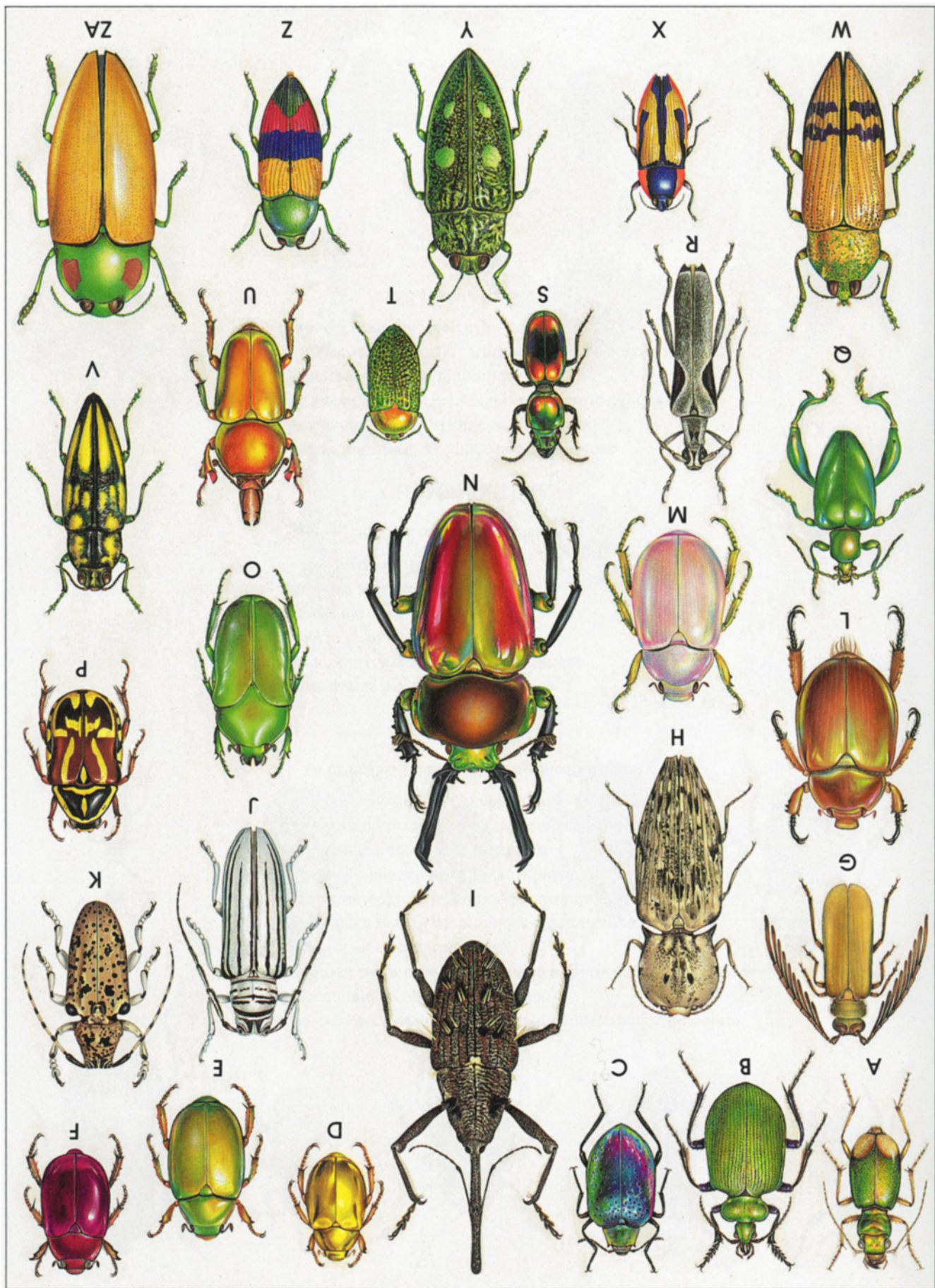


PLATE 5

COLEOPTERA

- A *Chrysolopus spectabilis*, Curculionidae-Aterpinae, blue form
- B *Episcaphula pictipennis*, Erotylidae
- C *Spilopyra sumptuosa*, Chrysomelidae-Eumolpinae
- D *Lemodes mastersi*, Anthicidae
- E *Apterotheca besti*, Tenebrionidae-Coelometopinae
- F *Rupilia ruficollis*, Chrysomelidae-Galerucinae
- G *Encymon immaculatus*, Endomychidae
- H *Pedilophorus gemmatus*, Byrrhidae
- I *Diphucephala colaspidoidea*, Scarabaeidae-Melolonthinae
- J *Paederus cruenticollis*, Staphylinidae-Paederinae

(A magnified 1.2 times, B–J magnified 3.6 times)

DIPTERA

- K *Clytocosmus helmsi*, Tipulidae
- L *Lamprogaster violacea*, Platystomatidae
- M *Laphria hirta*, Asilidae
- N *Scaptia auriflua*, ♂, Tabanidae
- O *Formosia speciosa*, Tachinidae
- P *Rutilia formosa*, Tachinidae

(All magnified 1.2 times)

HYMENOPTERA

- Q *Exeirius lateritius*, ♀, Sphecidae-Nyssoninae
- R *Diamma bicolor*, ♀, Tiphidae-Thynninae
- S *Myrmecia nigrocincta*, worker, Formicidae-Myrmeciinae
- T *Turneromyia* sp., ♀, Pompilidae
- U *Lestis aeratus* Smith, ♂, Anthophoridae-Xylocopinae
- V *Stilbum cyanurum*, ♀, Chrysididae

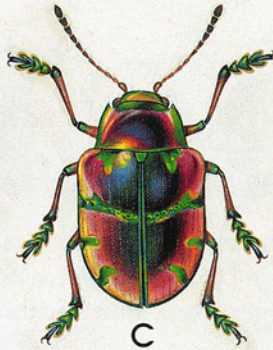
(All magnified 1.2 times)



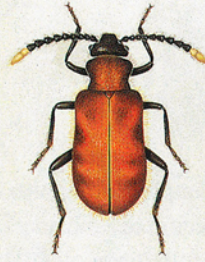
A



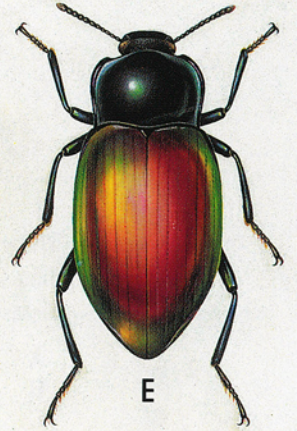
B



C



D



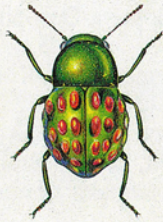
E



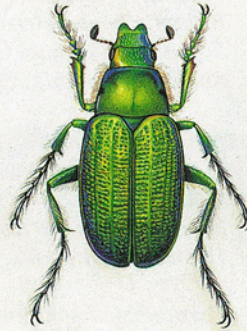
F



G



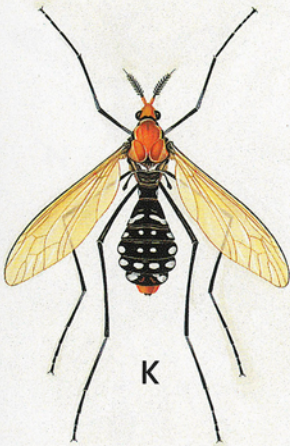
H



I



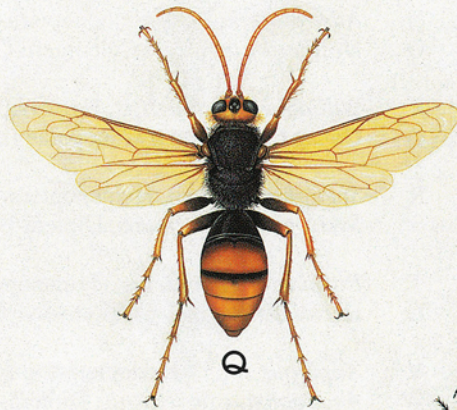
J



K



N



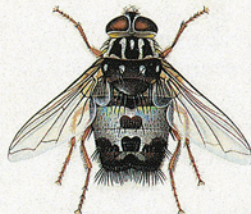
Q



S



L



O



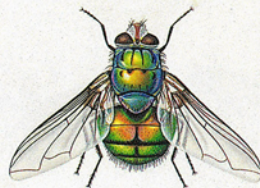
R



T



M



P



U



V

PLATE 6

BATESIAN MIMICRY

The examples (all approximately 1.2 times life size) are mostly of group rather than specific resemblances. In Lycidae and Braconidae the models are presumably distasteful; in the other Hymenoptera illustrated they have a powerful sting.

- A *Metriorrhynchus rhipidius*, Coleoptera-Lycidae (model)
- B *Eroschema poweri*, Coleoptera-Cerambycidae (mimic)
- C *Tmesidera rufipennis*, Coleoptera-Meloidae (mimic)
- D *Rhinotia haemoptera*, Coleoptera-Belidae (mimic)
- E *Stigmodera nasuta*, Coleoptera-Buprestidae (mimic)
- F *Snellenia lineata*, Lepidoptera-Oecophoridae (mimic)

- G *Hyleoides concinna*, Hymenoptera-Colletidae, a Müllerian mimic of many stinging wasps (model)
- H *Codula limbipennis*, Diptera-Asilidae (mimic)
- I *Syndipnomyia auricincta*, Diptera-Stratiomyidae (mimic)
- J *Hesthesis variegata*, Coleoptera-Cerambycidae (mimic)

- K *Pseudabispa ephippioides*, Hymenoptera-Vespidae (model)
- L *Chrysopogon crabroniformis*, Diptera-Asilidae (mimic)
- M *Hesthesis ferruginea*, Coleoptera-Cerambycidae (group mimic)

- N *Australozethus* sp., Hymenoptera-Vespidae (model)
- O *Hesthesis cingulata*, Coleoptera-Cerambycidae (mimic)

- P *Williamsita smithiensis*, Hymenoptera-Sphecidae (model)
- Q *Conops* sp., Diptera-Conopidae (mimic)

- R *Sceliphron laetum*, Hymenoptera-Sphecidae (model)
- S *Systropus flavoornatus*, Diptera-Bombyliidae (mimic)

- T *Paralastor constrictus*, Hymenoptera-Vespidae (model)
- U *Cerioides macleayi*, Diptera-Syrphidae (mimic)

- V *Auplopus* sp., Hymenoptera-Pompilidae (model)
- W *Agapophytus flavicornis*, Diptera-Therevidae (mimic)

- X *Clitemnestra* sp., Hymenoptera-Sphecidae (model)
- Y *Leucopsina odyneroides*, Diptera-Acroceridae (mimic)

- Z *Pycnobracon* sp., Hymenoptera-Braconidae (model)
- ZA *Plecia* sp., Diptera-Bibionidae (apparent mimic)

- ZB A braconine wasp, Hymenoptera-Braconidae (model)
- ZC *Hestiochora tricolor*, Lepidoptera-Zygaenidae (apparent mimic)
- ZD *Coracistis erythrocosma*, Lepidoptera-Oecophoridae (apparent mimic)

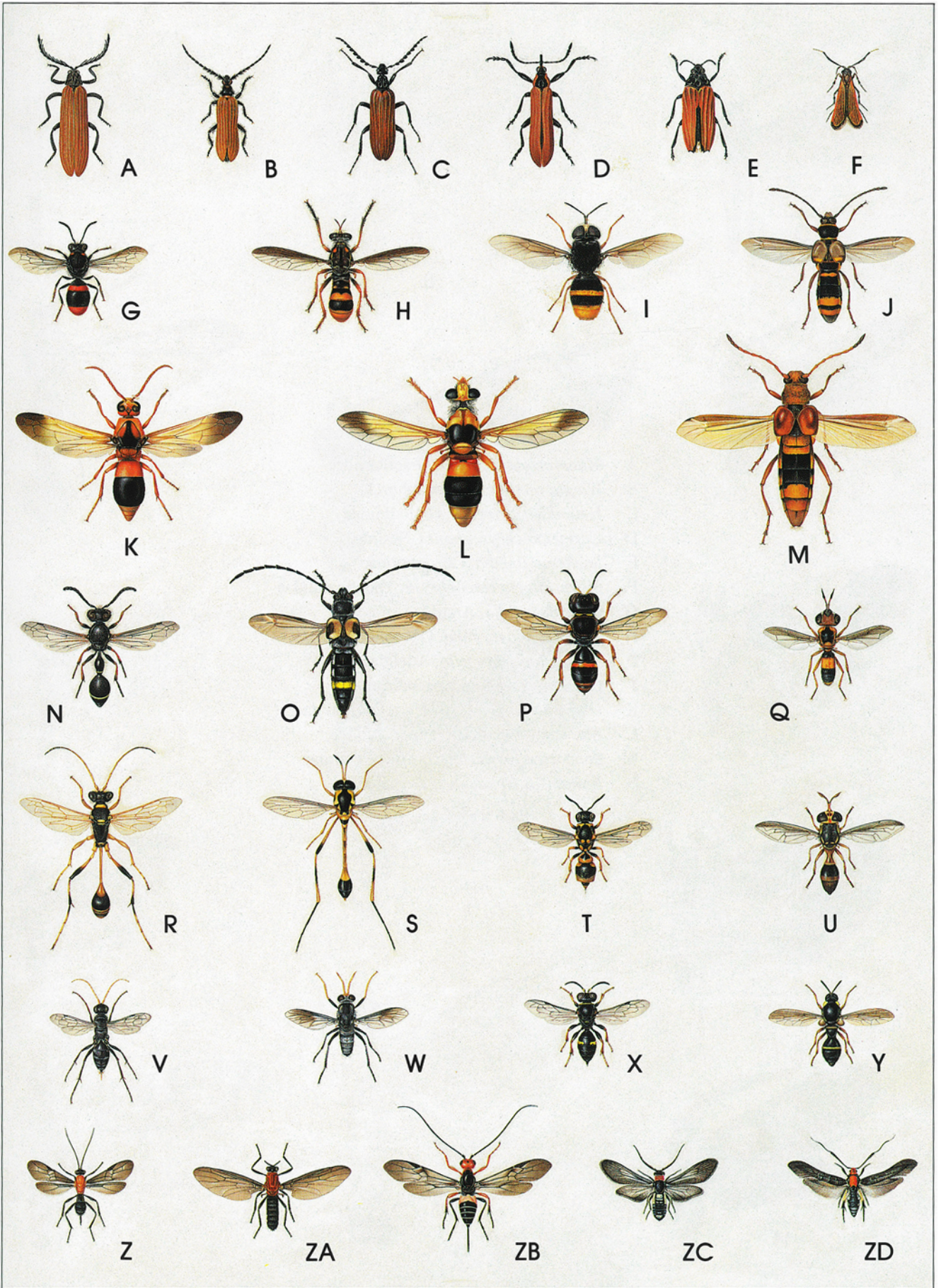


PLATE 7

LEPIDOPTERA

- A *Macarostola formosa*, Gracillariidae
- B *Wingia rectiorella*, Oecophoridae
- C *Heliodines princeps*, Heliodinidae
- D *Carmenta chrysophanes*, Sesiidae
- E *Snellenia lineata*, Oecophoridae
- F *Macarangela leucochrysa*, Yponomeutidae
- G *Oenistis entella*, Arctiidae
- H *Telecrates laetiorella*, Oecophoridae
- I *Nemophora sparsella*, Adelidae
- J *Comana coronae*, Limacodidae
- K *Dichomeris ochreoviridella*, Gelechiidae
- L *Atteva niphocosma*, Yponomeutidae
- M *Stemorrhages marthesiusalis*, Pyralidae
- N *Pollanisus trimaculus*, Zygaenidae

(Each scale = 2 mm)

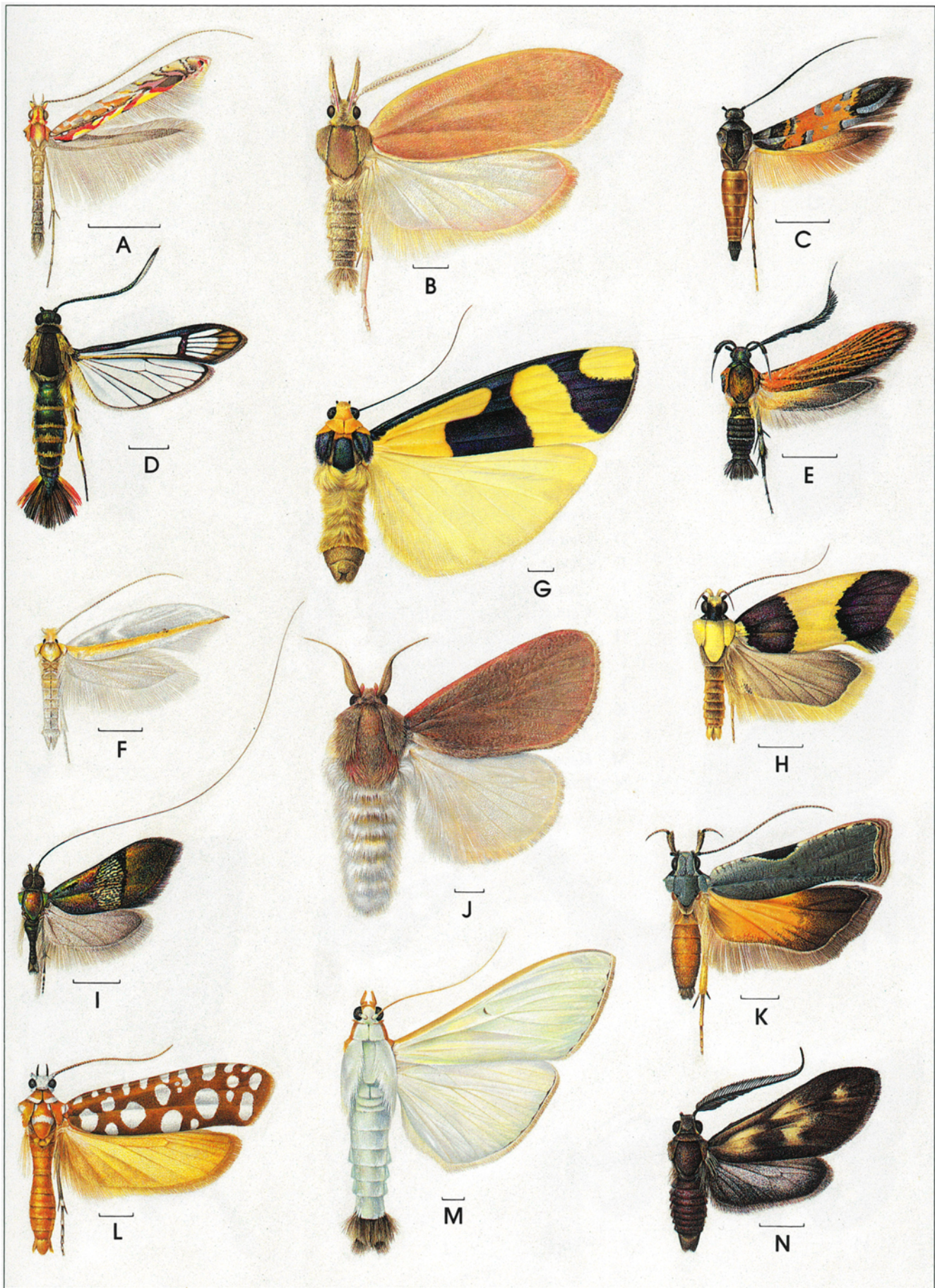


PLATE 8

LEPIDOPTERA

- A *Aenetus eximia*, ♂, Hepialidae
- B *Synemon magnifica*, Castniidae
- C *Hypochrysops apelles*, Lycaenidae
- D *Dudgeonea actinias*, Dudgeoneidae
- E *Ogyris genoveva*, ♂, Lycaenidae
- F *Coscinocera hercules*, ♂, Saturniidae
- G *Cethosia cydippe*, Nymphalidae
- H *Agape chloropyga*, Aganaiidae
- I *Alcides zodiaca*, Uraniidae
- J *Euchromia creusa*, Arctiidae
- K *Papilio ulysses*, Papilionidae
- L *Anisozyga pieroides*, Geometridae
- M *Hecatesia fenestrata*, Noctuidae
- N *Euschemon rafflesia*, Hesperidae

(Each scale = 10 mm)

